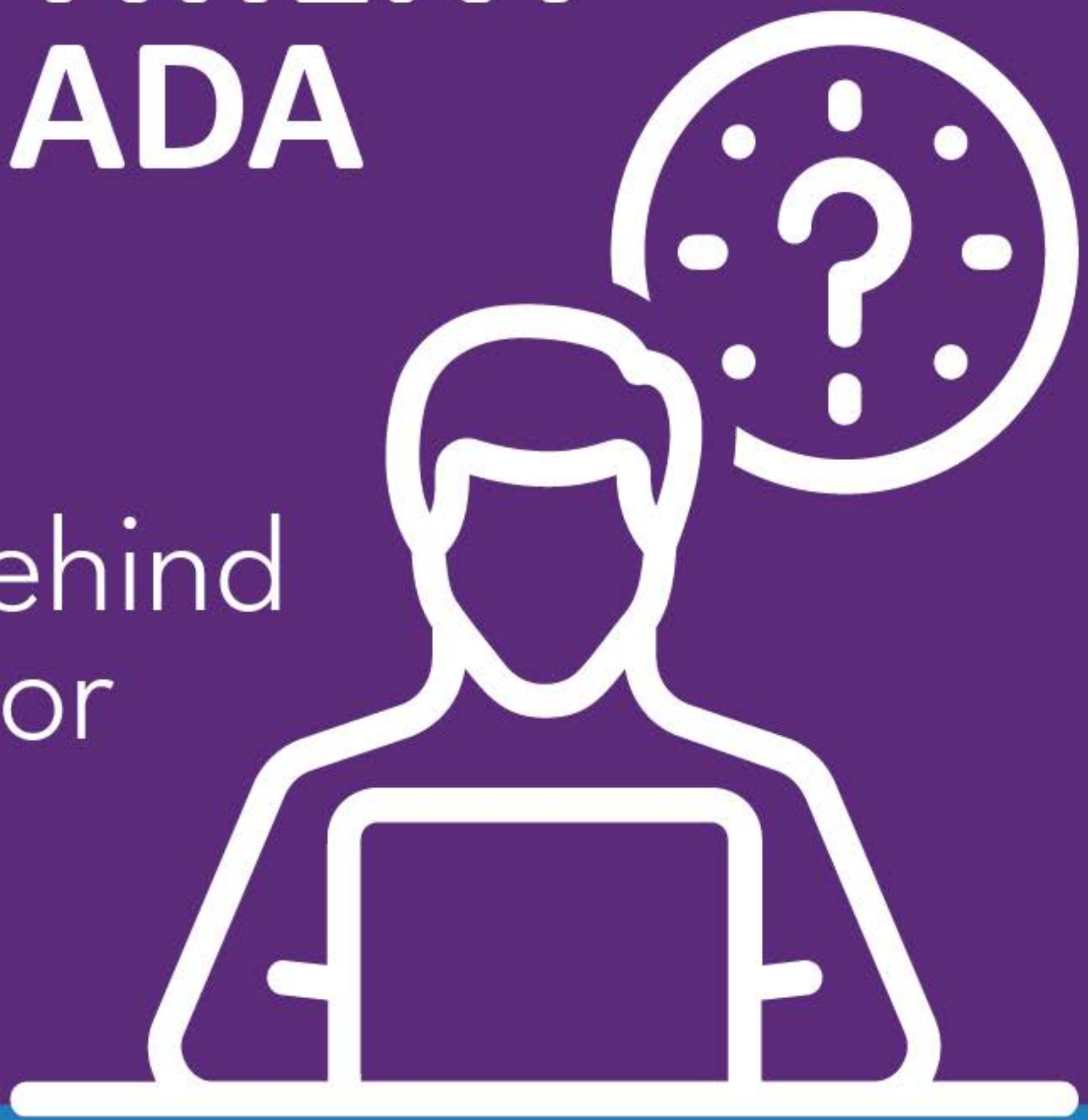


HOW THE HSS POWER EMPLOYMENT IN CANADA

The talent
pipeline behind
every sector



FEDERATION FOR THE
**HUMANITIES AND
SOCIAL SCIENCES**



The HSS are central to Canada's talent pipeline.



More than half of all postsecondary students in Canada are enrolled in humanities and social sciences programs.

This makes the HSS the **largest source of skilled workers** entering the labour market.



Bursting the HSS employment myth.



44% of HSS and other non-STEM students graduate in their original fields, compared to **37.4%** overall.

Higher graduation rates mean **more HSS graduates entering and staying in the workforce.**



HSS graduates are embedded across the workforce.

Postsecondary-educated workers make up nearly **one-third of Canada's working-age population.**



With strong graduation rates, **HSS graduates represent a significant share** of Canada's skilled labour force.



Diverse and durable career pathways.

HSS training supports **diverse career pathways** across government, education, community services, business, and creative sectors.

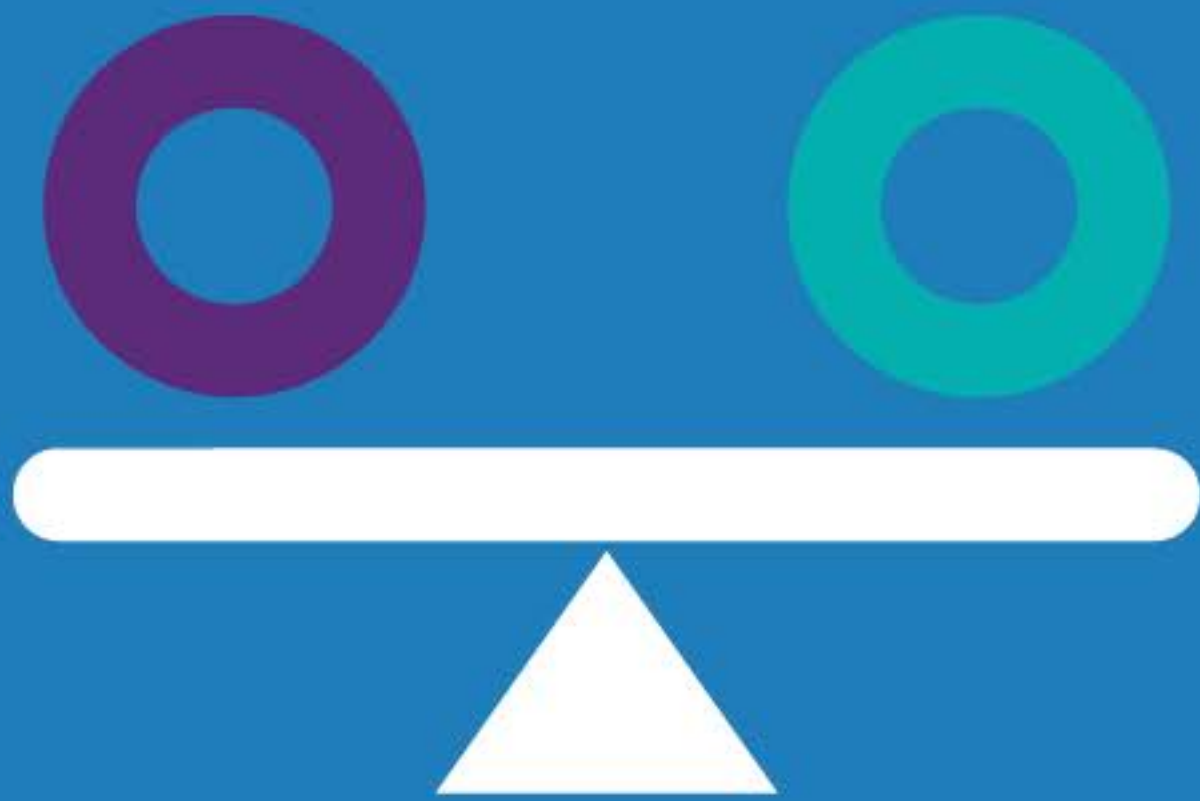


This distribution reflects **alignment** with labour-market demand.



How HSS work is valued in the labour market.

Many HSS careers sit in **publicly funded and nonprofit sectors**, with standardized salary progression, benefits, and pensions that support long-term stability.



Income levels reflect **sector funding structures**.



HSS skills and the future of work.

A 2025 Statistics Canada study shows **growing employer demand for non-routine, cognitive skills** such as creativity, adaptability, and judgment skills, most often developed through HSS training.



As automation reshapes the labour market, employer **demand is shifting toward non-routine, cognitive work.**



The humanities and social sciences power Canada's workforce and economy!



Think forward: Our future, shaped by the humanities and social sciences

Learn more:

federationhss.ca/think-forward



FEDERATION FOR THE
**HUMANITIES AND
SOCIAL SCIENCES**