

# (Critical) Community Engaged Scholarship: A Pathway to Research Impact

Dr. Elizabeth Jackson

Director, Community Engaged Scholarship Institute

e.jackson@uoguelph.ca



COMMUNITY ENGAGED  
SCHOLARSHIP INSTITUTE

 [cesinstitute.ca](https://cesinstitute.ca)

 [@CESIGuelph](https://twitter.com/CESIGuelph)

## Mandate, Values

- We work in **collaboration**, honouring **diverse forms and locations of knowledge**
- We **address community research priorities**
- All research outputs use **clear language, freely available**
- We **build capacity**, deliver programs, and **enable community-university collaborations** that create mutually beneficial impacts and increase capacity for engaged work
- We develop, implement and support **evidence-informed, rigorous practices** of community engaged **scholarship, teaching and learning, and knowledge mobilization**

# (Critical) Community Engaged Scholarship

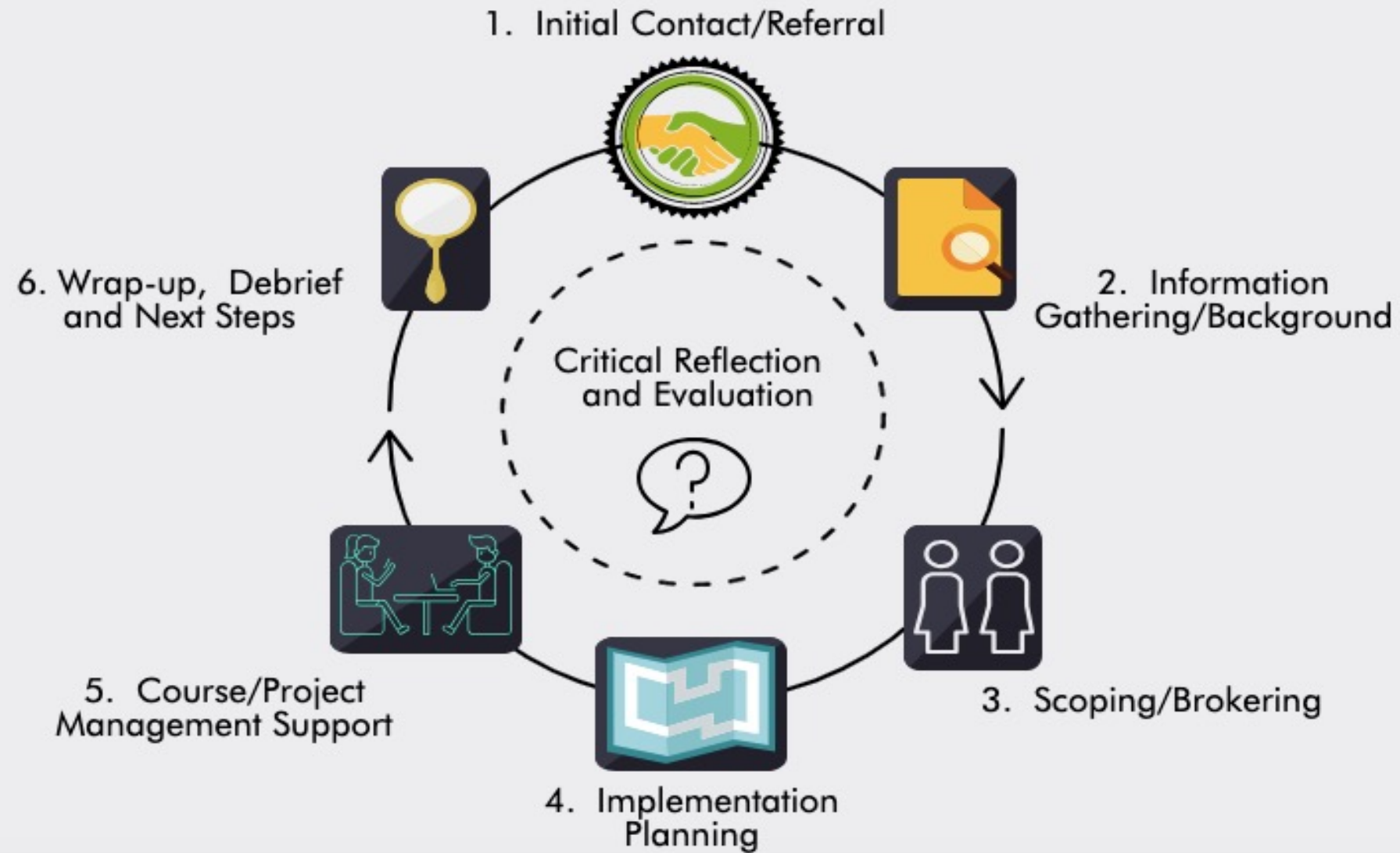
## Community Engaged Scholarship (CES)

- CES involves the researcher in a **mutually beneficial partnership** with the community
- Results in **scholarship** deriving from teaching, discovery, integration, application, engagement
- Research and knowledge mobilization for '**public good**'

## Critical Community Engaged Scholarship (CCES)

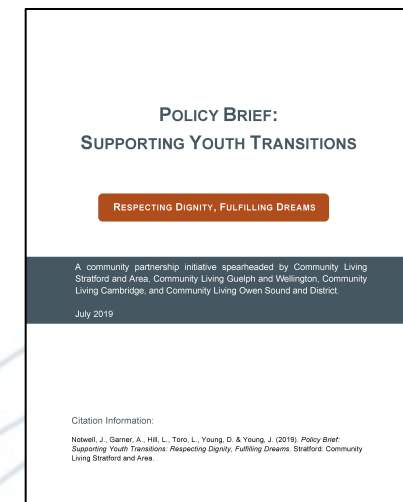
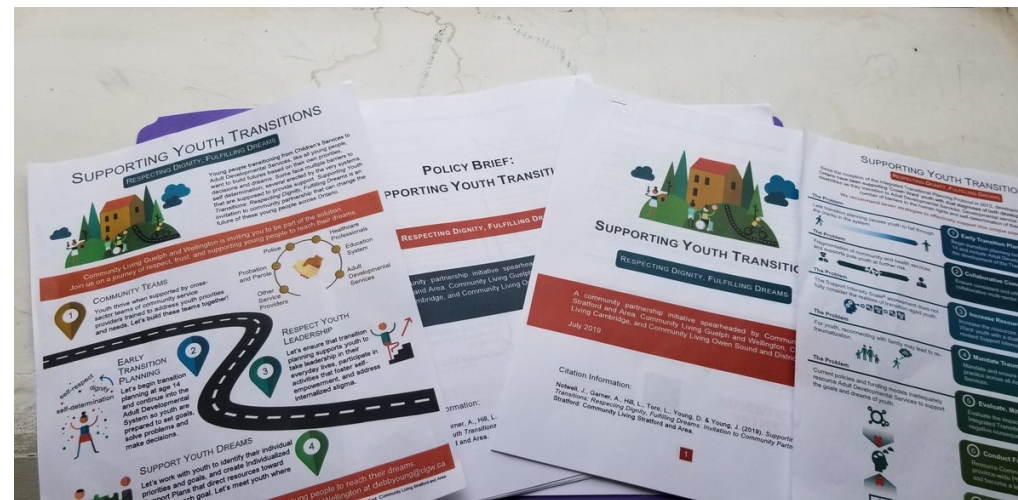
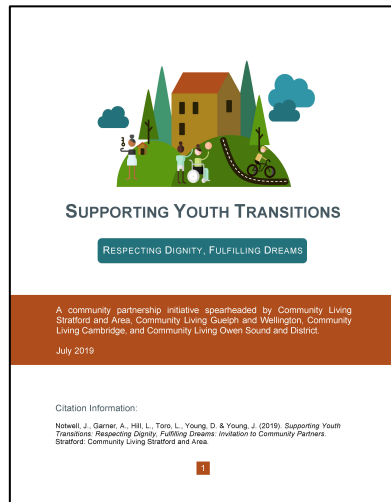
- Informed by **anti-racist** and other **anti-oppressive** critical theories; **asset-based** understandings of community
- Explicit focus on and commitment to justice and **roots of social issues**
- Mobilize scholarship in ways that **serve justice-seeking communities** and initiatives

(Gordon da Cruz, 2017; Jordan, 2007)



# TAY Research and Findings

- Thematic analysis of interviews and focus groups with managers, direct support professionals, and TAY
- Collaboratively designed KMb strategy
- Outputs: 2 targeted briefs – Policy Brief and Education Brief
  - 2 accompanying infographics, versions targeted to individual organizations



## Critical CES: Guiding Questions

- 1. Are we collaboratively developing critically conscious knowledge?
- 2. Are we authentically locating expertise?
- 3. Are we conducting race-conscious research and scholarship?
- 4. Is our work grounded in asset-based understandings of community?

**Cynthia Gordon da Cruz, *Critical Community-Engaged Scholarship: Communities and Universities Striving for Racial Justice*. Peabody Journal of Education 92; 363-384, 2017.**



# References & Resources

## References

Gordon da Cruz, C.G. (2017). Critical community-engaged scholarship: Communities and universities striving for racial justice, Peabody Journal of Education, 92(3), 363-384.

Jordan C. (Editor) (2007). Community-engaged scholarship review, promotion & tenure package. Peer Review Workgroup, Community-Engaged Scholarship for Health Collaborative, Community-Campus Partnerships for Health. Complete document available at <https://ccphealth.org/the-community-engaged-scholarship-review-promotion-tenure-package-2/>

\*The characteristics of quality community-engaged scholarship are drawn and adapted from these sources: Portland State University Promotion and Tenure guidelines, University of Washington School of Public Health and Community Medicine Promotion and Tenure guidelines, National Review Board for the Scholarship of Engagement guidelines, and Glassick C, Huber M and Maeroff G, Scholarship Assessed: Evaluation of the Professoriate, San Francisco: Jossey-Bass Publishers, 1997

## Resources

[Community Engaged Scholarship Institute website](#)

[CESI's Key Terms & Values](#)

[Transition Aged Youth Project - project details & outputs](#)

[Transition Aged Youth Project - blog feature on the CESI website](#)

# Thank you!

# Feel free to be in touch!

e.jackson@uoguelph.ca



COMMUNITY ENGAGED  
SCHOLARSHIP INSTITUTE



 [cesinstitute.ca](https://cesinstitute.ca)

 [@CESIGuelph](https://twitter.com/CESIGuelph)